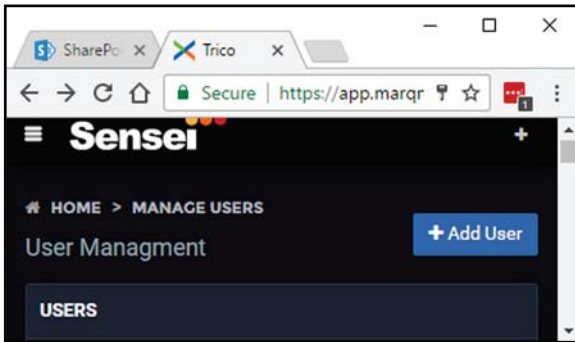
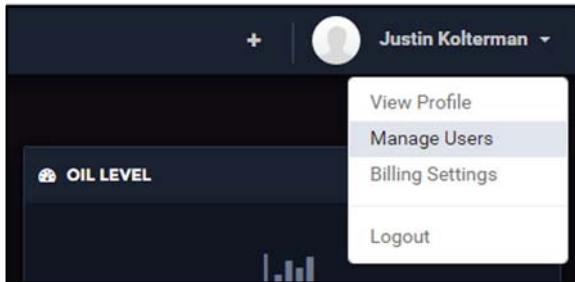


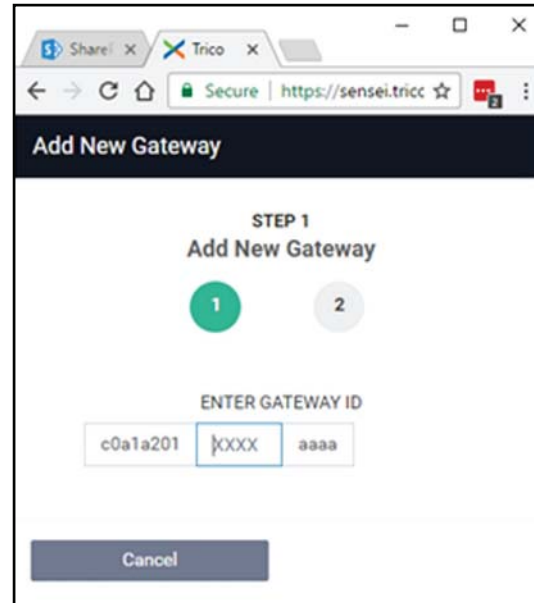
STEP 1 - Login and Set Up

- ❑ Login to account at <https://sensei.tricocorp.com>.
- ❑ Add Users to Organization or Site. See detailed manual for information on roles.

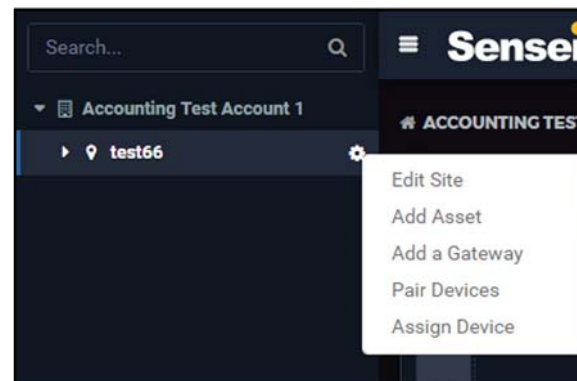


- ❑ Add the Gateway to your site. This registers the Gateway and allows it to connect when turned on.
- ❑ There is a 4-digit ID that can be found on the outside of the Stand-Alone Gateway or the Cellular Gateway. Type this where the "XXXX" appears and click "Next".

cont. STEP 1 - Login and Set Up



- ❑ Add Assets to your site. Assets provide a way to organize your site. Assets can be areas, lines, equipment, etc. The asset name will be what's viewed in the navigation menus and widgets.



STEP 2 - Install the Gateway

Stand-Alone Gateway

- ❑ Install the Stand-Alone Gateway in a location that will easily connect to the local computer network.
- ❑ Install the Stand-Alone Gateway as far from any heavy equipment as possible and keep the antenna away from metal for better range.



- ❑ Plug power (5-24 VDC) into either the barrel connector or green plug. A 120 VAC plug is included. If you prefer to wire to DC use the green adapter that is included.
- ❑ Plug one end of the Ethernet cable into the Stand-Alone Gateway and plug the other end into the network jack on the wall.



- ❑ Validate that the first 3 LEDs turn green (Power, Ethernet, and Server).

cont. STEP 2 - Install the Gateway

Cellular Gateway

- ❑ Install the Cellular Gateway in a location that is known to have good cellular signal and is within 200 ft of where the oiler will be installed.
- ❑ Plug the Cellular Gateway in with the 120 VAC cord that is provided. **NOTE:** The Cellular Gateway can also plug directly to 24 VDC. See detailed manual for instructions.

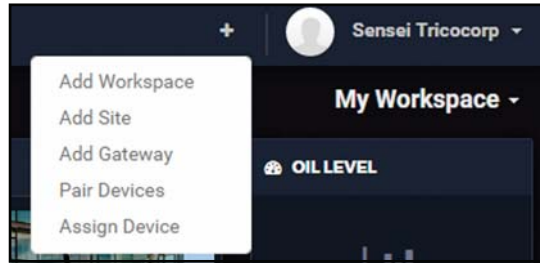


- ❑ Open the front panel of the Cellular Gateway and verify the first 3 LEDs turn green. (Power, Ethernet, and Server).

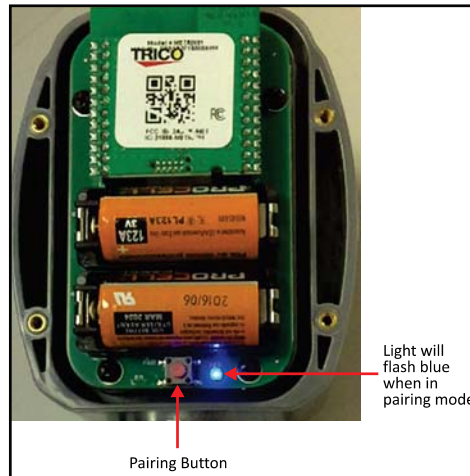
STEP 3 - Install Repeaters

- ❑ Repeaters can be installed up to 1000 ft away from a Gateway or another repeater. This will depend on the amount of interference in between.
- ❑ Install the repeater in the center of the sensors.
- ❑ The repeater should be installed as high as possible.
- ❑ Install the repeater as far from any heavy equipment as possible.
- ❑ Plug power (5-24 VDC) in either the barrel connector or the green plug.
- ❑ Validate the first 2 LEDs turn green.
- ❑ Put the Gateway in pairing mode by selecting the "Pair Device" from the "+" sign in the top bar.

cont. STEP 3 - Install Repeaters



STEP 4 - Install Oilers



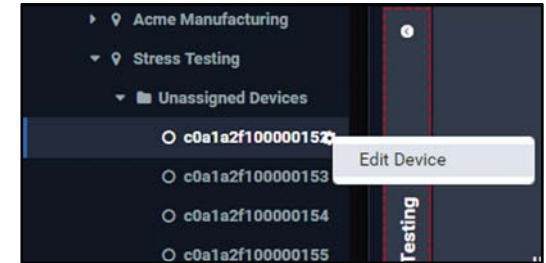
Light will flash blue when in pairing mode

Pairing Button

- ❑ Remove battery cover and remove pull tabs from the batteries.
- ❑ Press the pairing button. The blue light will turn on briefly to confirm oiler is in pairing mode.
- ❑ Put the Gateway in pairing mode.
- ❑ When the blue LED stops flashing, pairing is complete. **NOTE:** the device will not show up on the website for 3-5 minutes.
- ❑ Replace battery cover.
- ❑ Tighten cover with provided screws.
- ❑ Install oiler in desired location per Opto-Matic documentation.
- ❑ Place extra oiler ID sticker next to asset on your asset list.

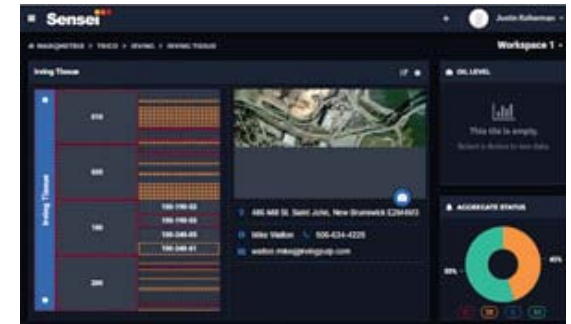
STEP 5 - Assign Devices to Assets

- ❑ Select a device from the "Unassigned Devices" list and assign to the correct asset.



STEP 6 - Monitor Equipment

- ❑ Login at <https://sensei.tricocorp.com> to access your equipment information online.



Additional Information

- ❑ Browse to <https://sensei.tricocorp.com> for complete documentation or scan the code below.

