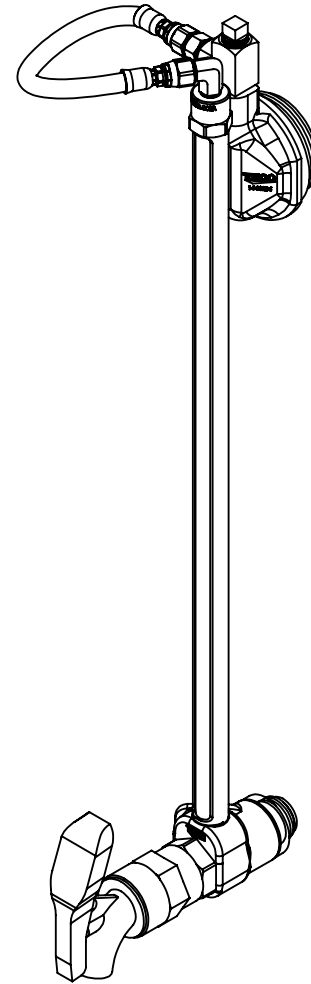
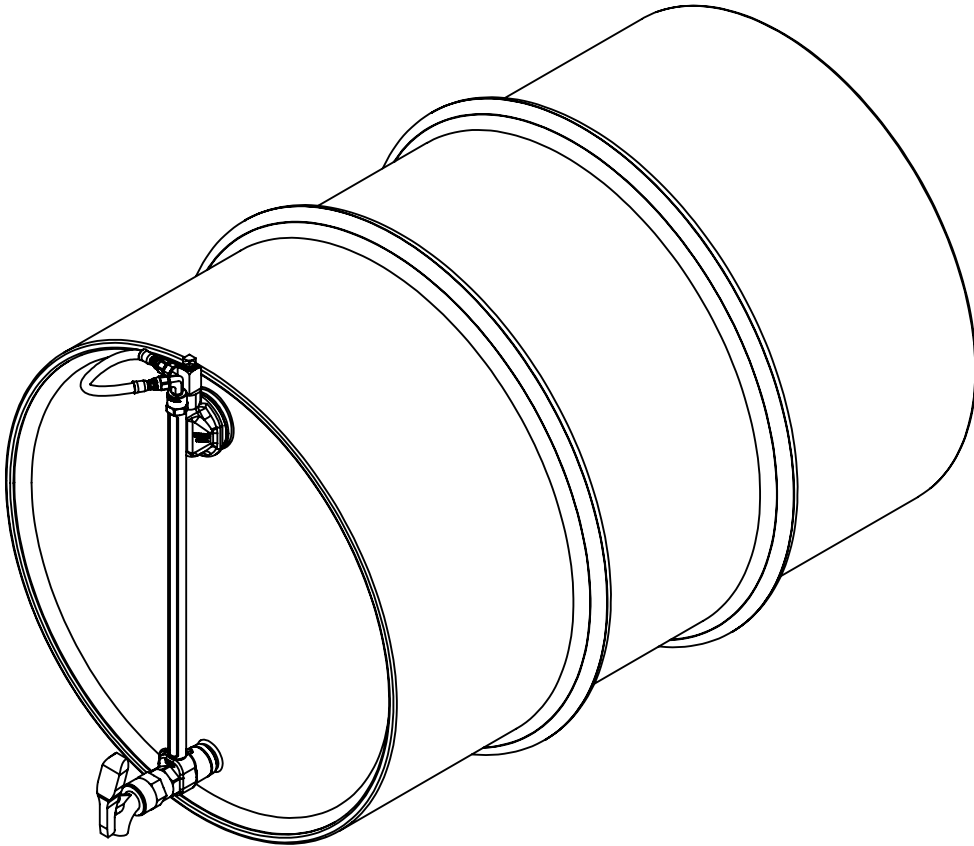


DRUM LIQUID LEVEL GAUGE ASSEMBLY INSTRUCTIONS

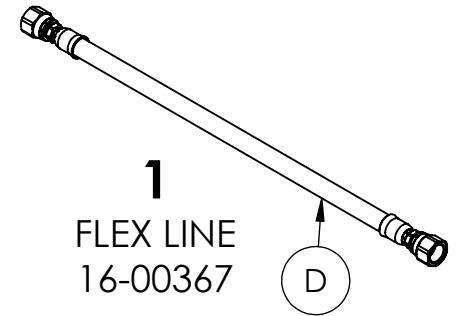
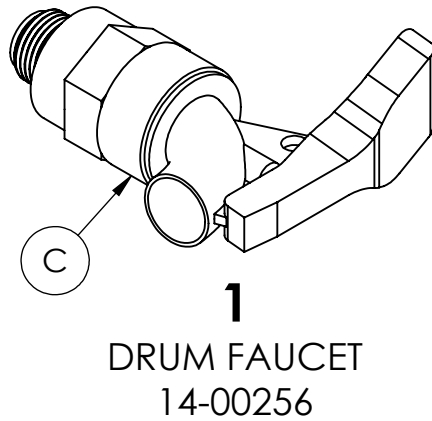
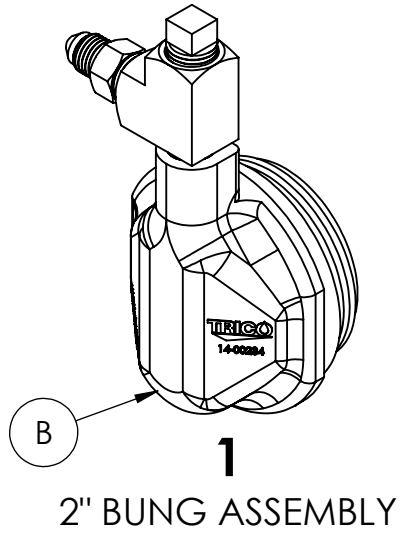
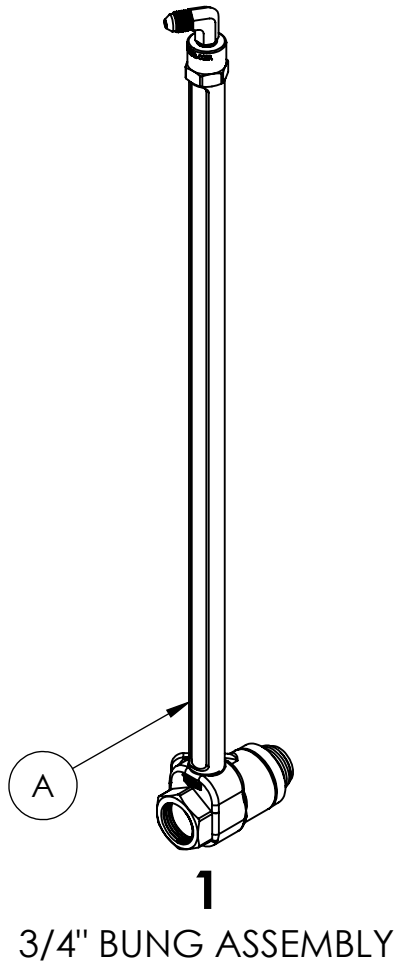


61262
Rev 1 10/21/2019

**COVER
SHEET**

1 OF 5

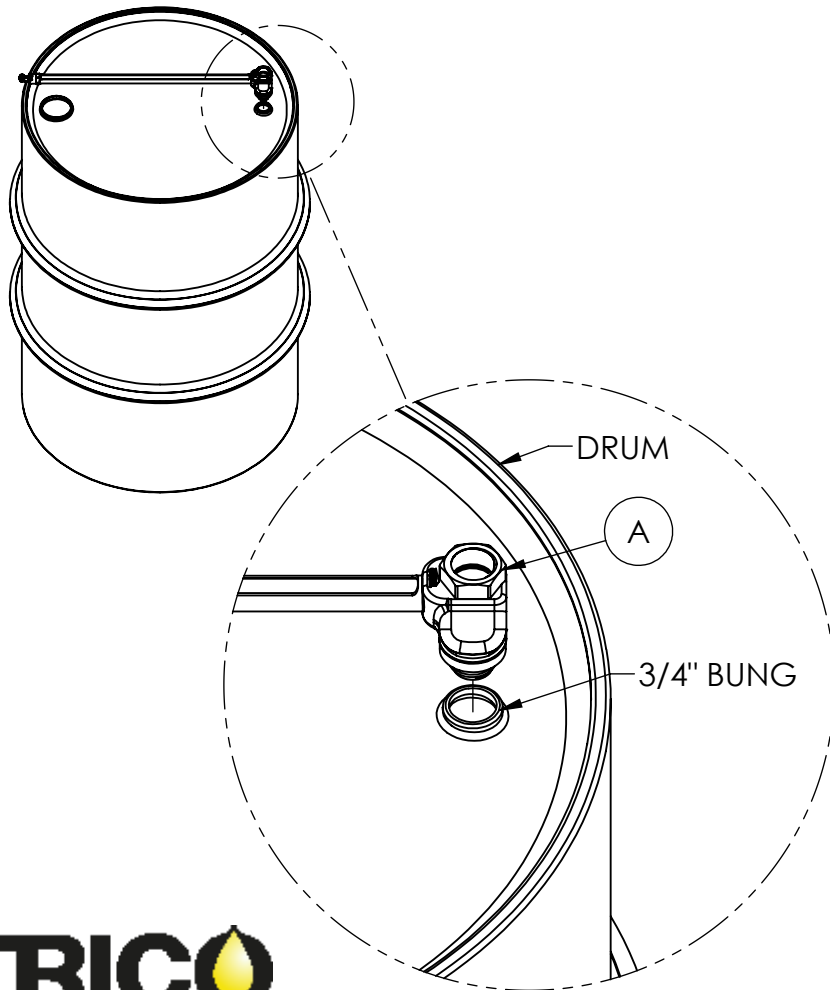
DRUM LIQUID LEVEL GAUGE ASSEMBLY INSTRUCTIONS



DRUM LIQUID LEVEL GAUGE ASSEMBLY INSTRUCTIONS

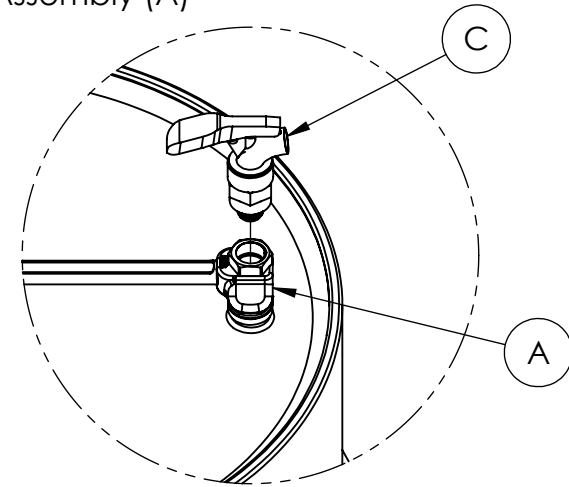
STEP 1

1. Remove both 2" and 3/4" Bungs from Drum
2. Screw 3/4" Bung Assembly (A) into the 3/4" Bung hole on Drum making sure the assembly is tight onto the drum compressing the gasket and lining up with the 2" Bung



STEP 2

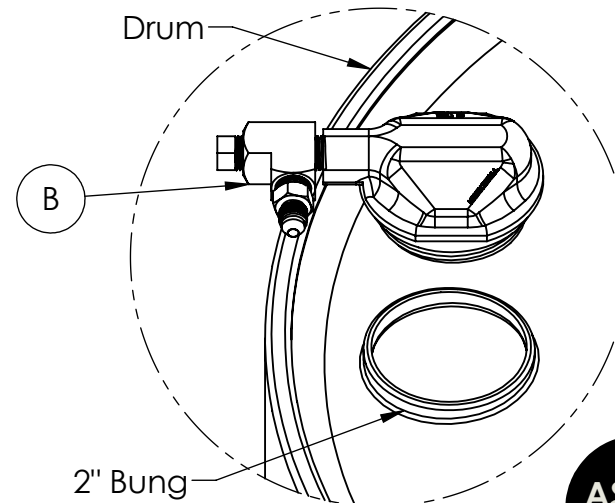
1. Using thread sealant, attach Drum Faucet (C) to 3/4" Bung Assembly (A)



STEP 3

1. Screw 2" Bung Assembly (B) into the 2" Bung hole on Drum making sure the assembly is tight onto the drum compressing the gasket and lining up with the liquid level gauge (A)

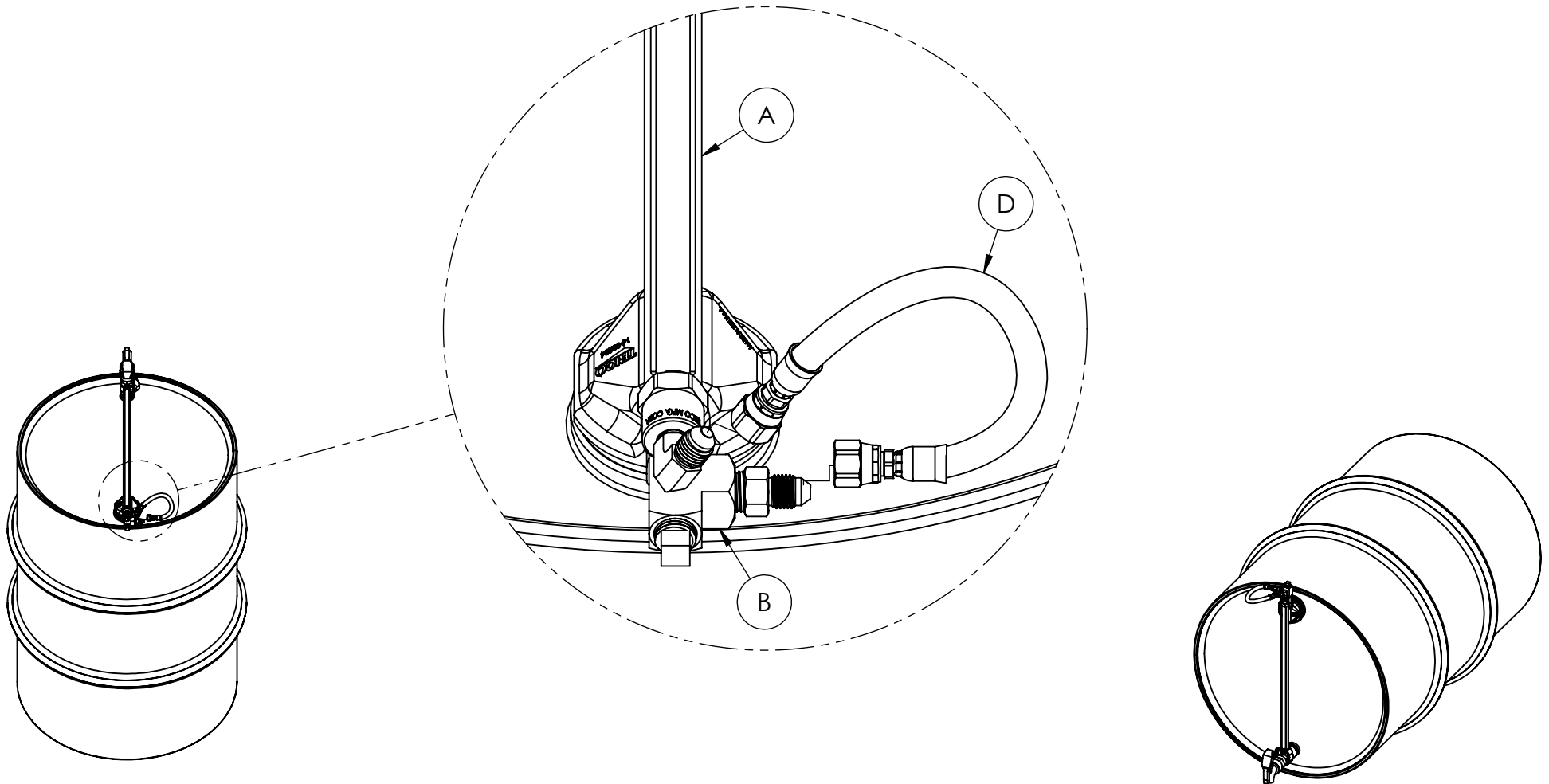
Note: You may need to turn the Liquid Level Gauge (A) away from the 2" Bung Hole for easier assembly (Part A not shown below)



DRUM LIQUID LEVEL GAUGE ASSEMBLY INSTRUCTIONS

STEP 4

1. Connect Flex Line (D) to both JIC fittings on the 3/4" Bung Assembly (A) and 2" Bung Assembly (B)
2. Make sure 1/4" Plug is tight on top of the 2" Bung Assembly (B) and then flip the drum horizontally into storage location with the 3/4" Bung Assembly (A) facing towards the spill containment area



DRUM LIQUID LEVEL GAUGE SPECIFICATIONS

ALL DIMENSIONS SHOWN IN INCHES

