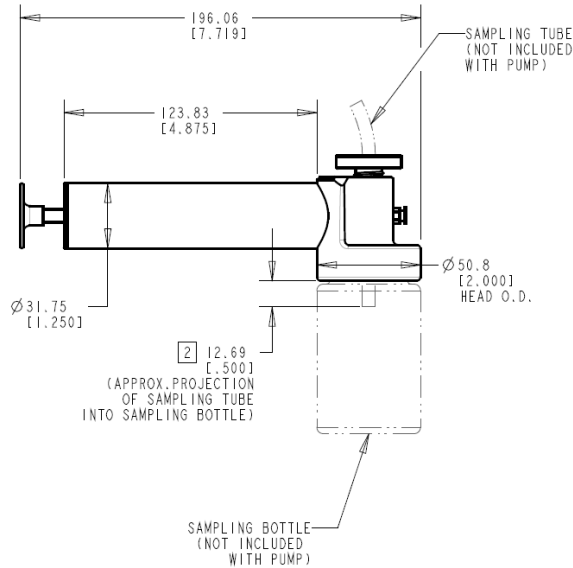




Read Instructions Before Installing

NOTE: This pump will accept the following tube sizes: 5/16", 1/4", and 3/16". To avoid cross-contamination of samples, use a new tube for each sampling.

1. Cutting ends of the sampling tube to an angle of approximately 45° will help prevent scraping up of sludge from the inside of dip stick pipes and/or side and bottoms of oil reservoirs when insert the sampling tubes.



2. When preparing to draw an oil sample, always insert the sampling tube completely through the coupling device, with the end of the tube projecting about 1/2" below the top of the sample container. The fluid being sampled will then flow from the tube directly into the container without coming in contact with any part of the pump. This not only prevent cross-contamination of samples, but (with a little care) allows an unlimited number of samples to be drawn without the necessity of cleaning the pump.

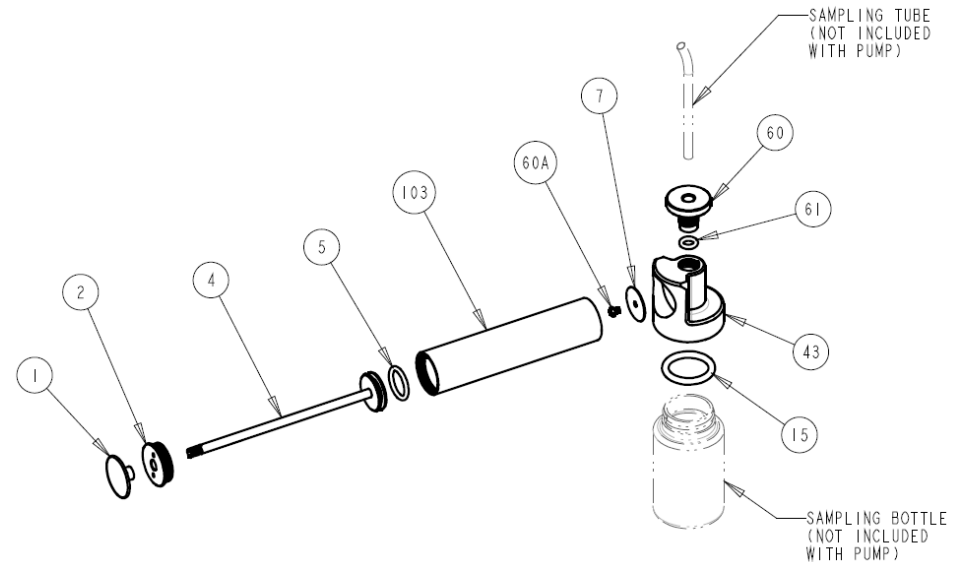
3. To start drawing an oil sample, make sure the inlet end of sample tube is well below the surface of the fluid to be sampled, then begin pumping. The pump should draw 27 inches of mercury vacuum in eight or nine strokes. Watch closely as the fluid starts flowing; when the bottle is about 3/4 full, loosen the coupling device nob to stop the flow. Holding it in will allow the tube to drain.

4. To remove the head for cleaning or repairs, grasp barrel in one hand and tap head lightly with small mallet.



Parts Breakdown:

Image No.	Description
1	Pull Handle
2	Header Nut
103	Cylinder
4	Piston and Rod Assembly
5	O-Ring, Piston Seal
60A	Number 6 Machine Screw
7	Flapper Valve
15	O-Ring, Jar Seal
60	Coupling Device Knob
61	O-Ring, Sample Tube Seal
43	Head, Molded Nylon

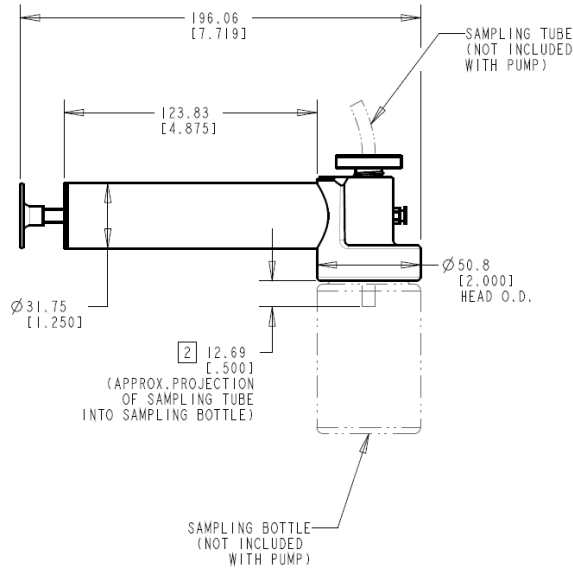




Read Instructions Before Installing

NOTE: This pump will accept the following tube sizes: 5/16", 1/4", and 3/16". To avoid cross-contamination of samples, use a new tube for each sampling.

1. Cutting ends of the sampling tube to an angle of approximately 45° will help prevent scraping up of sludge from the inside of dip stick pipes and/or side and bottoms of oil reservoirs when insert the sampling tubes.



2. When preparing to draw an oil sample, always insert the sampling tube completely through the coupling device, with the end of the tube projecting about 1/2" below the top of the sample container. The fluid being sampled will then flow from the tube directly into the container without coming in contact with any part of the pump. This not only prevent cross-contamination of samples, but (with a little care) allows an unlimited number of samples to be drawn without the necessity of cleaning the pump.

3. To start drawing an oil sample, make sure the inlet end of sample tube is well below the surface of the fluid to be sampled, then begin pumping. The pump should draw 27 inches of mercury vacuum in eight or nine strokes. Watch closely as the fluid starts flowing; when the bottle is about 3/4 full, loosen the coupling device nob to stop the flow. Holding it in will allow the tube to drain.

4. To remove the head for cleaning or repairs, grasp barrel in one hand and tap head lightly with small mallet.



Parts Breakdown:

Image No.	Description
1	Pull Handle
2	Header Nut
103	Cylinder
4	Piston and Rod Assembly
5	O-Ring, Piston Seal
60A	Number 6 Machine Screw
7	Flapper Valve
15	O-Ring, Jar Seal
60	Coupling Device Knob
61	O-Ring, Sample Tube Seal
43	Head, Molded Nylon

