



# Heavy-Duty Vacuum Pump with Release Valve

## Read Instructions Before Installing

**NOTE:** Fits most containers that use 38MM threads.

The heavy-duty vacuum pump is designed to make it easy to draw representative oil and fluid samples from heavy equipment, machinery, transformers and reservoirs.

**FOLDING STAND** - Helps reduce contamination of the sample by keeping the pump out of dirt. It allows the pump to be left in an upright position while the person sampling uses his hands to replace a dip stick, change jars etc. When finished, the stand may be folded back for storage.

It is very important that oil or fluids are not drawn or allowed to leak back into the valve or cylinder area. This not only results in cross-contamination of samples, but will cause leakage or loss of vacuum at the flapper valve. Keep flapper valve free and clean of oil fluids and dirt.

**VACUUM RELEASE VALVE** - Push the button to instantly release the vacuum. This prevents over filling and the mess that results. Always keep valve clean and free of oil and dirt.

**COUPLING DEVICE KNOB** - The easy to turn "CD Knob" takes either 3/16", 1/4", or 5/16" OD poly tubing. It requires only a turn or two of the "CD Knob" to insert a clean tube or change to another size. It is not necessary to remove the "CD Knob". A drop of oil on the O-ring will make it easier to insert tube.

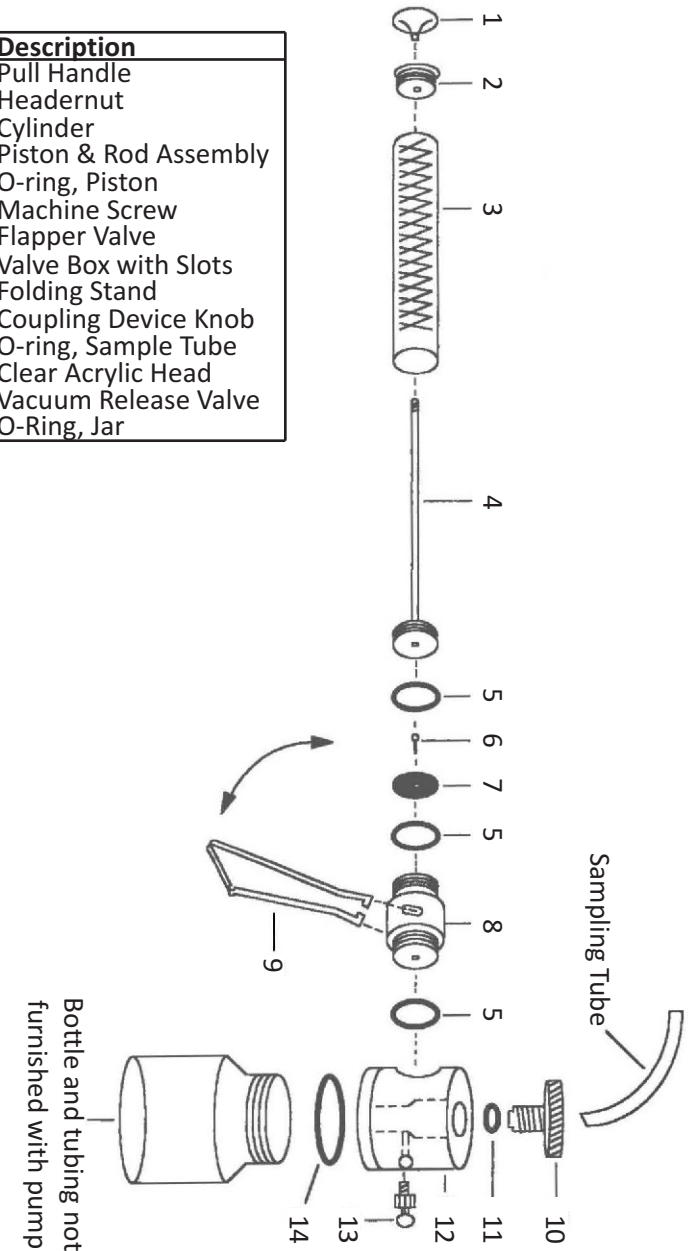
**NOTE:** Insert the tube completely through the "CD Knob" to just below the top of sampling container. This prevents oil from touching the sample pump.

**PISTON & CYLINDER** - A couple of drops of light oil through the hole in the header nut, will lubricate this area and make pumping easier. Never oil the piston on the side next to the flapper valve, as too much oil here caused the valve to malfunction.



# Heavy-Duty Vacuum Pump with Release Valve

| Item | Quantity | Description           |
|------|----------|-----------------------|
| 1    | 1        | Pull Handle           |
| 2    | 1        | Headernut             |
| 3    | 1        | Cylinder              |
| 4    | 1        | Piston & Rod Assembly |
| 5    | 3        | O-ring, Piston        |
| 6    | 1        | Machine Screw         |
| 7    | 1        | Flapper Valve         |
| 8    | 1        | Valve Box with Slots  |
| 9    | 1        | Folding Stand         |
| 10   | 1        | Coupling Device Knob  |
| 11   | 1        | O-ring, Sample Tube   |
| 12   | 1        | Clear Acrylic Head    |
| 13   | 1        | Vacuum Release Valve  |
| 14   | 1        | O-Ring, Jar           |





# Heavy-Duty Vacuum Pump with Release Valve

## Read Instructions Before Installing

**NOTE:** Fits most containers that use 38MM threads.

The heavy-duty vacuum pump is designed to make it easy to draw representative oil and fluid samples from heavy equipment, machinery, transformers and reservoirs.

**FOLDING STAND** - Helps reduce contamination of the sample by keeping the pump out of dirt. It allows the pump to be left in an upright position while the person sampling uses his hands to replace a dip stick, change jars etc. When finished, the stand may be folded back for storage.

It is very important that oil or fluids are not drawn or allowed to leak back into the valve or cylinder area. This not only results in cross-contamination of samples, but will cause leakage or loss of vacuum at the flapper valve. Keep flapper valve free and clean of oil fluids and dirt.

**VACUUM RELEASE VALVE** - Push the button to instantly release the vacuum. This prevents over filling and the mess that results. Always keep valve clean and free of oil and dirt.

**COUPLING DEVICE KNOB** - The easy to turn "CD Knob" takes either 3/16", 1/4", or 5/16" OD poly tubing. It requires only a turn or two of the "CD Knob" to insert a clean tube or change to another size. It is not necessary to remove the "CD Knob". A drop of oil on the O-ring will make it easier to insert tube.

**NOTE:** Insert the tube completely through the "CD Knob" to just below the top of sampling container. This prevents oil from touching the sample pump.

**PISTON & CYLINDER** - A couple of drops of light oil through the hole in the header nut, will lubricate this area and make pumping easier. Never oil the piston on the side next to the flapper valve, as too much oil here caused the valve to malfunction.



# Heavy-Duty Vacuum Pump with Release Valve

| Item | Quantity | Description           |
|------|----------|-----------------------|
| 1    | 1        | Pull Handle           |
| 2    | 1        | Headernut             |
| 3    | 1        | Cylinder              |
| 4    | 1        | Piston & Rod Assembly |
| 5    | 3        | O-ring, Piston        |
| 6    | 1        | Machine Screw         |
| 7    | 1        | Flapper Valve         |
| 8    | 1        | Valve Box with Slots  |
| 9    | 1        | Folding Stand         |
| 10   | 1        | Coupling Device Knob  |
| 11   | 1        | O-ring, Sample Tube   |
| 12   | 1        | Clear Acrylic Head    |
| 13   | 1        | Vacuum Release Valve  |
| 14   | 1        | O-Ring, Jar           |

